

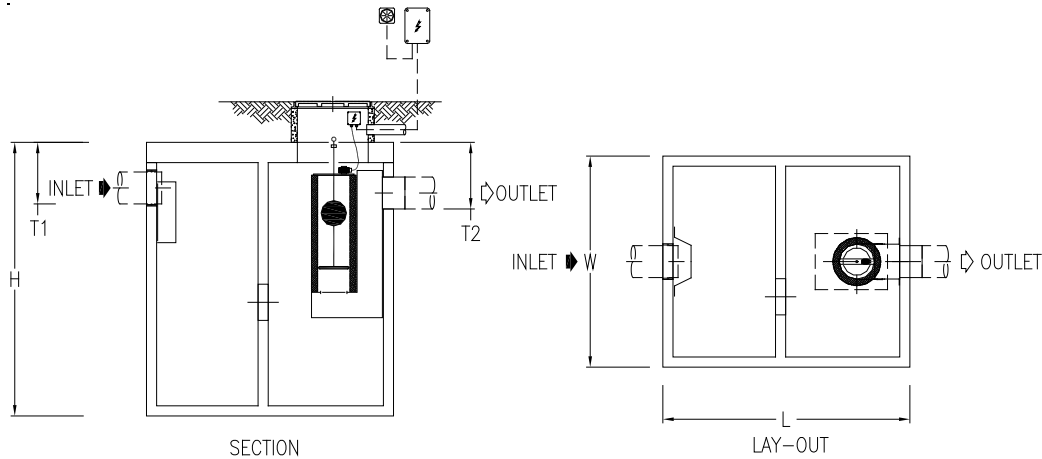
# SIAC NG SERIES - REINFORCED CONCRETE

Mineral oil and hydrocarbon separator with integrated sludge trap - 5 mg/l  
 Suitable for covered and uncovered areas, fuel distribution areas and car repair shop,  
 automatic car wash and self-service



## TECHNICAL DESCRIPTION

Mineral oil and hydrocarbon separator with sludge trap in reinforced and vibrated concrete, internally painted. The separator is equipped with inlet and outlet connectors, a sludge trap and one internal coalescent filters. An automatic closing device with a float prevents hydrocarbon outflow.



## TECHNICAL ADVANTAGES

- Design according to the EN 858-1 standard and CE marking, to respect the legislation in force.
- Manufactured in reinforced and vibrated concrete Rck with a resistance upper than 400 kg/cmq.
- Dimensioned for a 5000 Kg /m<sup>2</sup> distributed load (Truck passage cover)
- Manhole covers in ductile cast iron class D400 according to EN 124 standard
- Internal parts in AISI 304
- Minimum sludge trap volume: 5.000 l
- Hydrocarbon retention volume : 30 l per l/sec of treated flow
- Residual content lower than 5 mg/l for hydrocarbons density 0,85 (according to EN 858-1 standard)
- Output of the separator: 99,88%

## DIMENSIONAL SPECIFICATIONS

REFERENCE	UNIT OF MEAS.	SIAC 4	SIAC 10	SIAC 15	SIAC 24	SIAC 36	SIAC 48	SIAC 60	SIAC 75
Treated flow	lt/sec	4	10	15	24	36	48	60	75
Surface drainage (Pluvial index: 150 l/sec)	m <sup>2</sup>	270	670	1.000	1.600	2.400	3.200	4.000	5.000
Sludge trap volume	lt	5.000	5.300	5.300	5.300	7.600	9.900	12.300	15.300
Separator volume	lt	790	1.500	2.600	3.500	5.700	7.200	10.100	11.700
Hydrocarbon retention vol.	lt	250	300	400	600	1.000	1.600	1.800	2.100
Length (L)	cm	240	260	305	325	408	560	720	860
Width	cm	225	230	230	240	230	230	230	230
Height (H)	cm	200	200	200	200	250	250	250	250
Weight	kg	9.000	9.500	10.500	11.500	17.500	22.500	27.000	32.000
Inlet height (T1)	cm	45	45	45	45	60	70	70	70
Outlet height (T2)	cm	50	50	50	50	65	75	75	75
Inlet pipe Ø	mm	1 x 200	1 x 200	1 x 200	1 x 200	1 x 315	1 x 400	1 x 400	1 x 400
Outlet pipe Ø	mm	1 x 200	1 x 200	1 x 200	1 x 200	1 x 315	2 x 315	2 x 315	2 x 315

### Important:

To be installed underground and out of hydromorphic ground. A regular maintenance according EN 852-2 standard and NF P 16 442 November 2007 is necessary. The extension shaft(s) system and cover(s) are not supplied. Please gain knowledge about the installation instructions of hydrocarbon steel separators.