

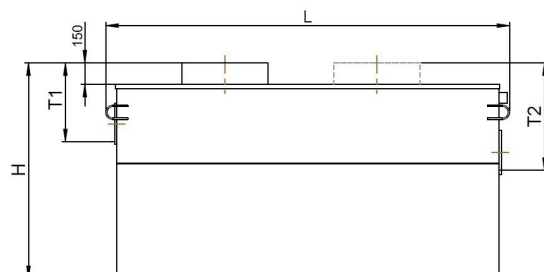
IDROPASS SERIES - PAINTED STEEL

Hydrocarbon separator 5mg/l with sludge trap and bypass
access shaft
Suitable for run-off rainwater from uncovered area



TECHNICAL DESCRIPTION

Hydrocarbon separator with sludge trap, storm overflow weir and bypass, in shot blasted steel, coated with inner and outer epoxy paint, operating by gravity flow. The separator is equipped with watertight fitted inlet/outlet connectors, a storm overflow weir and bypass located upstream of the sludge trap and a coalescent system. An automatic closing device with a float prevents hydrocarbon from discharging at the outlet.



Apparatus NF certified by the CSTB (Scientific and Technical Centre for the Building industry), according XP P16 451-1/CN, CE marking (EN 858-1 standard).

Ventilation DN75, for safety.

Access shaft(s) (Height: 150mm), without manhole cover(s).

SPECIFICATIONS CERTIFIED BY THE CSTB (Independent organism)

- Useful volumes of the sludge trap, and the separator and hydrocarbon retention volumes.
- Discharge class I (5mg/l for a hydrocarbon density of 0,85, according EN 858-1 standard).
- Dimensions.

TECHNICAL ADVANTAGES OF NF MARKING

- Check on each separator → Guarantee of its water tightness
- Traceability of the manufacturing process → Guarantee of used materials (steel, paint)
- Dimensioning calculation note → Guarantee of mechanical strength
- Permanent audit by the CSTB and the CERIB → Guarantee of a constant quality
- CE apparatus have the same manufacturing process of NF → Guarantee of the same performances

DIMENSIONAL SPECIFICATIONS

REFERENCE	UNIT OF MEAS.	NF408	NF408	NF408	NF408	NF408	NF408	CE EN 858-1	CE EN 858-1	CE EN 858-1	CE EN 858-1	CE EN 858-1
		IdroPASS 3	IdroPASS 6	IdroPASS 8	IdroPASS 10	IdroPASS 15	IdroPASS 20	IdroPASS 25	IdroPASS 30	IdroPASS 35	IdroPASS 40	IdroPASS 50
Treated flow	lt/sec	3,0	6	8	10	15	20	25	30	35	40	50
Peak flow	lt/sec	15	30	40	50	75	100	125	150	175	200	250
Sludge trap volume	lt	300	600	800	1.000	1.500	2.000	2.500	3.000	3.500	4.000	5.000
Separator volume	lt	188	400	632	507	445	588	729	913	1.389	1.590	2.108
Hydrocarbon retention vol.	lt	174	373	584	450	365	460	582	729	1.157	1.301	1.694
Length (L)	mm	1.424	2.115	2.115	2.290	2.780	3.621	3.621	3.971	3.971	4.523	4.912
Width	mm	746	823	1.076	1.076	1.076	1.076	1.314	1.314	1.465	1.465	1.615
Height (H)	mm	1.170	1.370	1.510	1.510	1.510	1.650	1.650	1.860	1.960	1.960	2.090
Weight	kg	178	296	374	407	521	610	676	791	865	950	1.142
Inlet height (T1)	mm	470	570	660	685	650	780	780	910	910	910	990
Outlet height (T2)	mm	570	670	760	785	750	880	880	1.010	1.010	1.010	1.090
In-out pipe Ø	mm	200	250	315	315	315	400	400	400	400	400	500
Number of access shaft(s)	mm	1	2	2	2	2	2	2	2	2	2	2
Access shaft(s) Ø	mm	600	600	600	600	750	750	950	950	950	950	950

Important:

A regular maintenance according EN 852-2 standard and NF P 16 442 November 2007 is necessary.
Please acquaint yourself with the installation instructions of hydrocarbon steel separators.