

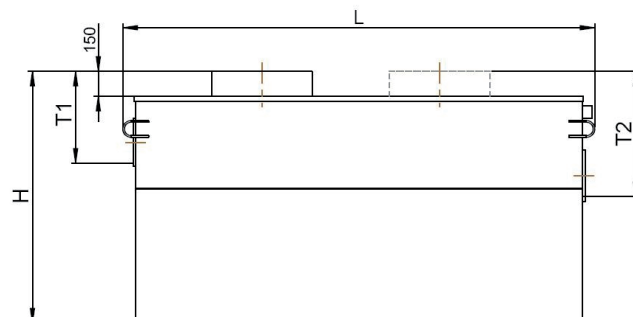
IDROLAVPASS SERIES - STEEL

Hydrocarbon separator 5mg/l with triple sludge trap and bypass access shaft
Suitable for run-off rainwater from uncovered area, with massive presence of sedimentable solids



TECHNICAL DESCRIPTION

Hydrocarbon separator with triple sludge trap, storm overflow weir and bypass, in shot blasted steel, coated with inner and outer epoxy paint, operating by gravity flow. The separator is equipped with watertight fitted inlet/outlet connectors, a storm overflow weir and bypass located upstream of the sludge trap and a coalescent system. An automatic closing device with a float prevents hydrocarbon from discharging at the outlet.



Apparatus NF certified by the CSTB (Scientific and Technical Centre for the Building industry), according XP P16 451-1/CN, CE marking (EN 858-1 standard). Ventilation DN75, for safety.
Access shaft(s) (Height: 150mm), without cover system type, to facilitate the installation.

SPECIFICATIONS CERTIFIED BY THE CSTB (Independent organism)

- Useful volumes of the triple sludge trap, and the separator and hydrocarbon retention volumes.
- Discharge class I (5mg/l for a hydrocarbon density of 0,85, according EN 858-1 standard).
- Dimensions.

TECHNICAL ADVANTAGES OF NF MARKING

- Control of each separator → Guarantee of its water tightness
- Traceability of the manufacturing process → Guarantee of used materials (steel, paint)
- Dimensioning calculation note → Guarantee of mechanical strength
- Permanent audit by the CSTB and the CERIB → Guarantee of a constant quality

DIMENSIONAL SPECIFICATIONS

REFERENCE	UNIT OF MEAS.	NF NF408 Idro LAVPASS 3	NF NF408 Idro LAVPASS 6	NF NF408 Idro LAVPASS 8	NF NF408 Idro LAVPASS 10	NF NF408 Idro LAVPASS 15	NF NF408 Idro LAVPASS 20
Treated flow	lt/sec	3	6	8	10	15	20
Peak flow	lt/sec	15	30	40	50	75	100
Sludge trap volume	lt	900	1.800	2.400	3.000	4.500	6.000
Separator volume	lt	532	726	762	834	972	1.122
Hydrocarbon retention vol.	lt	468	662	658	706	789	669
Length (L)	mm	2.115	3.621	3.621	3.971	4.523	4.912
Width	mm	1.076	1.076	1.314	1.314	1.465	1.615
Height (H)	mm	1.510	1.650	1.650	1.860	1.960	2.090
Weight	kg	355	587	669	776	938	1.111
Inlet height (T1)	mm	660	780	780	910	910	990
Outlet height (T2)	mm	760	880	880	1.010	1.010	1.090
In-out pipe Ø	mm	200	250	315	315	315	315
Number of access shaft(s)	mm	2	2	2	2	2	2
Access shaft(s) Ø	mm	600	750	950	950	950	950

Important:

A regular maintenance according EN 852-2 standard and NF P 16 442 November 2007 is necessary.
Please acquaint yourself with the installation instructions of hydrocarbon steel separators.